

Pressure sensor 100 kPa



Manual for installation, setup and calibration
Handleiding voor installatie, instelling en kalibratie
Anleitung für Installation, Setup und Kalibrierung

Pressure sensor 100 kPa

Part nr: 01-01-07-1012

EN



Technical specifications and
calibration values

This document contains detailed information about the KMS pressure sensor 100 kPa. Additional information, user manuals, wiring examples and software can be found on our website: kms.vankronenburg.nl

Package contents

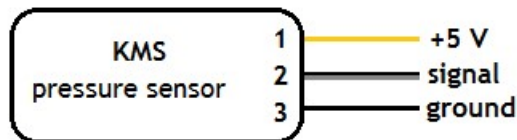
- KMS pressure sensor 100 kPa module
- 3P contra connector superseal
- KMS pressure sensor 100 kPa user manual

Specifications

- EMC protection up to 100V
- Temperature-compensated
- Ratio metric output
- Sensor cell resistive to fuels (incl. Diesel) and oils such as engine lube oil

Wiring

- Yellow: +5V supply from ECU
- Grey/black: signal (0-5V), connect to ECU
- Black: sensor ground, connect to sensor ground of ECU



KMS pressu100 kPa

Calibration values

- At 3.75 volt: 94 kPa
- At 1.25 volt: 38 kPa

When using a KMS ECU, these values must be set in the KMS ECU software. See figure below for an example:

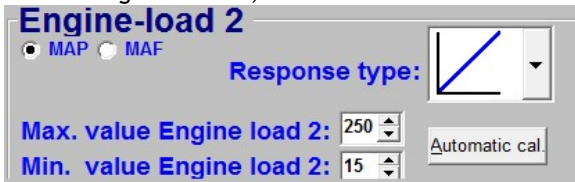



Boost value calibration
 Pressure at MAP output 3,75V: 94 kpa
 Pressure at MAP output 1,25V: 38 kpa

Engine-load 2' values for software setup

- Min. Value : 15
- Max. Value : 250

When using a KMS ECU, these values must be set in the KMS ECU software.



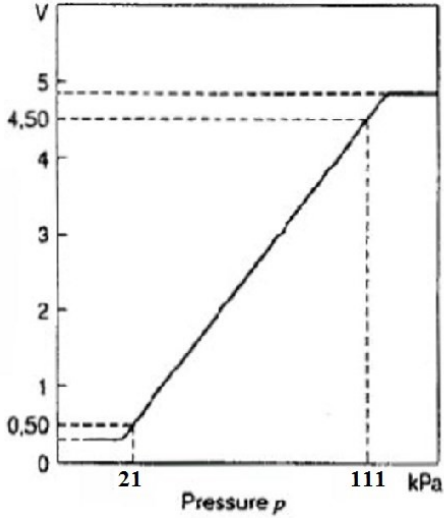
Engine-load 2
 MAP MAF
 Response type: 
 Max. value Engine load 2: 250
 Min. value Engine load 2: 15
 Automatic cal.

		Min.	Typical	Max.
Technical data				
Supply voltage Uv	Volt	4.74	5.1	5.46
Current input Iv at Uv = 5 V	mA	-	6	10
Minimum pressure offset (0 to 85 °C) Volt		0.241	0.306	0.371
Accuracy (at 25 °C)	Volt	-	0.0701	-
Upper Limit at Uv = 5 V	Volt	4.476	4.606	4.736
Response time 10/90	ms	-	1	-
Warm up time	ms	-	20	-
Operating temperature	Deg. C	-40	0 to 85	125

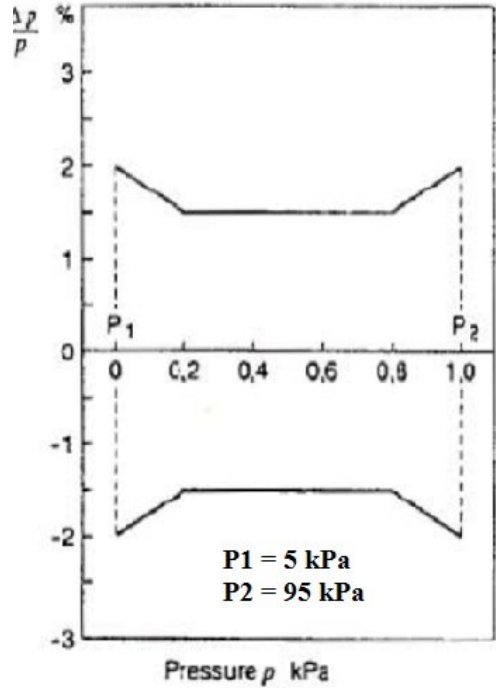
KMS pressure sensor 100 kPa

Part nr: 01-01-07-1012 Version
2.00

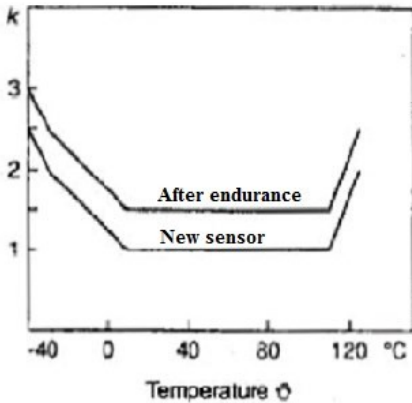
Characteristic curve ($U_V = 5.0V$)



Characteristic-curve tolerance



Tolerance extension factor

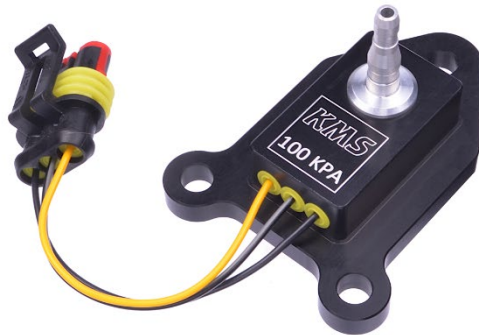


KMS pressu100 kPa

Druksensor 100 kPa

Onderdeel nr: 01-01-07-1012

NL



Technische specificaties en
kalibratie waarden

Dit document bevat gedetailleerde informatie over de KMS druksensor 100 kPa. Overige informatie, handleidingen, kabelboomschema's en software kan worden gevonden op onze website: kms.vankronenburg.nl

Inhoud van de kit

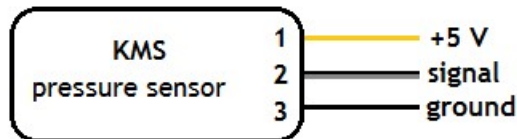
- KMS druksensor 100 kPa
- 3 polige contra stekker superseal
- KMS druksensor 100 kPa handleiding

Specificaties

- EMC bescherming tot 100V
- Temperatuur gecompenseerd
- Metrische uitgang
- Sensor bestand tegen brandstoffen (incl. diesel) en smeerstoffen zoals motorolie

Bekabeling

- Geel: +5V voeding van ECU
- Grijs/zwart: signaal (0-5V), aansluiten op ECU
- Zwart: sensor massa, aansluiten op sensor massa van ECU



KMS druksensor 100 kPa

Calibratiewaarden

- Bij 3.75 volt: 94 kPa
- Bij 1.25 volt: 38 kPa

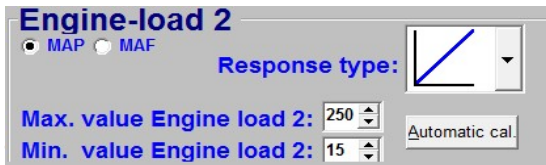
Wanneer er een KMS ECU wordt gebruikt, moeten deze waarden in de KMS ECU software worden ingesteld. Zie onderstaande afbeelding ter illustratie:



‘Engine-load 2’ waarden voor software setup

- Min. waarde: 15
- Max. waarde: 250

Wanneer er een KMS ECU wordt gebruikt, moeten deze waarden in de KMS ECU software worden ingesteld. Zie onderstaande afbeelding ter illustratie:

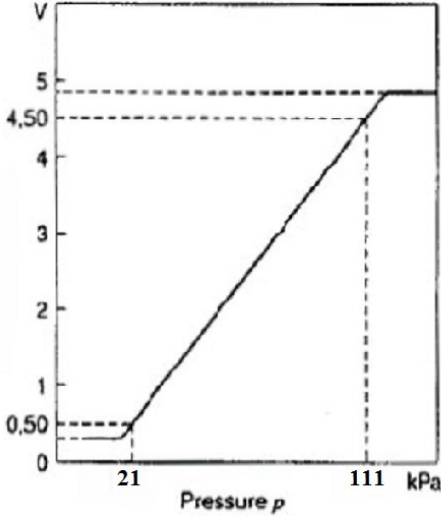


		Min.	Typical	Max.
Supply voltage Uv	Volt	4.74	5.1	5.46
Current input Iv at Uv = 5 V	mA	-	6	10
Minimum pressure offset (0 to 85°C) Volt		0.241	0.306	0.371
Accuracy (at 25°C)	Volt	-	0.0701	-
Upper Limit at Uv = 5 V	Volt	4.476	4.606	4.736
Response time 10/90	ms	-	1	-
Warm up time	ms	-	20	-
Operating temperature	Deg. C	-40	0 to 85	125

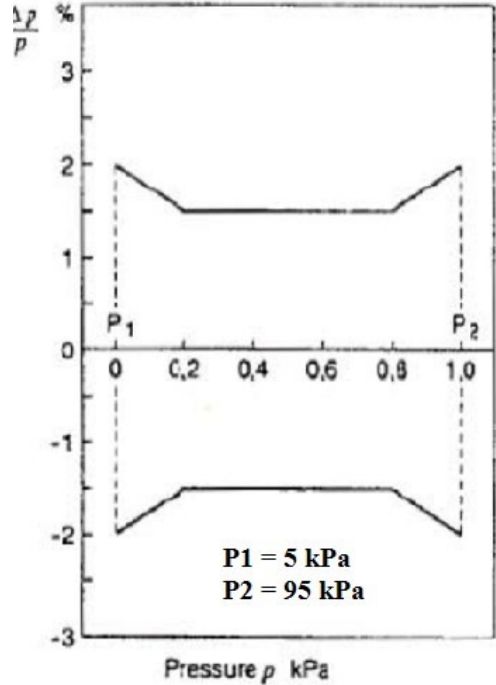
KMS druksensor 100 kPa

Onderdeel nr: 01
Versie 2.00

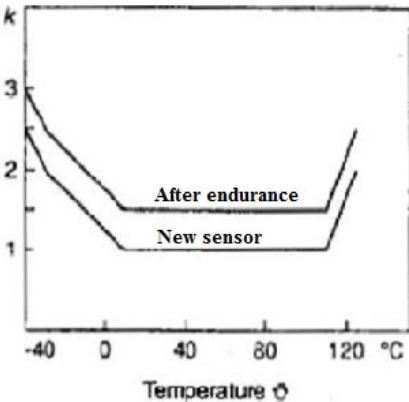
Characteristic curve ($U_v = 5.0v$)



Characteristic-curve tolerance



Tolerance extension factor

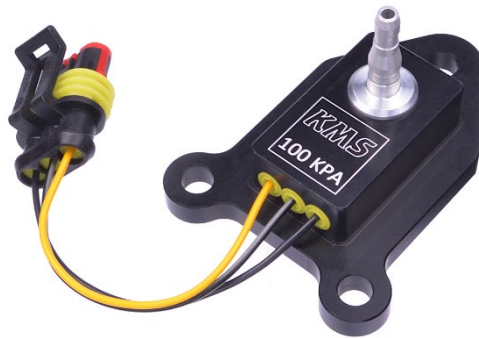


KMS druksensor 100 kPa

Drucksensor 100 kPa

Teilenummer: 01-01-07-1012

DE



Technische Information und
Kalibrierungswerte

Dieses Dokument enthält detaillierte Information über den KMS Drucksensor 100 kPa. Weitere Informationen, Bedienungsanleitungen, Schaltpläne finden Sie auf unserer Website: kms.vankronenburg.nl

Inhalt von diesem Kit

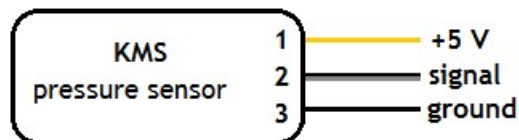
- KMS Drucksensor 100 kPa
- 3-poliger superseal Stecker
- Bedienungsanleitung KMS Drucksensor 100 kPa

Spezifikation

- EMC Schutz bis zu 100V
- Temperatur kompensiert
- Metrischer außgang
- Sensor beständig gegen Kraftstoffen (incl. diesel) und Schmierstoffe

Verkabelung

- Gelb: +5V Anschluß vom ECU
- Grau/schwarz: Signal (0-5V) zum ECU
- Schwarz: Sensormasse zur Sensormasse vom ECU



KMS Drucksensor 100 kPa

Kalibrationswerte

- Bei 3.75 Volt: 94 kPa
- Bei 1.25 Volt: 38 kPa

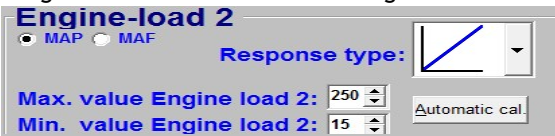
Wenn ein KMS ECU verwendet wird, müssen diese Werte in der KMS ECU Software eingestellt werden. Siehe Abbildung unten für ein Beispiel:



'Engine-load 2' Werte für der Software Einstellungen

- Min. Werte: 15
- Max. Werte: 250

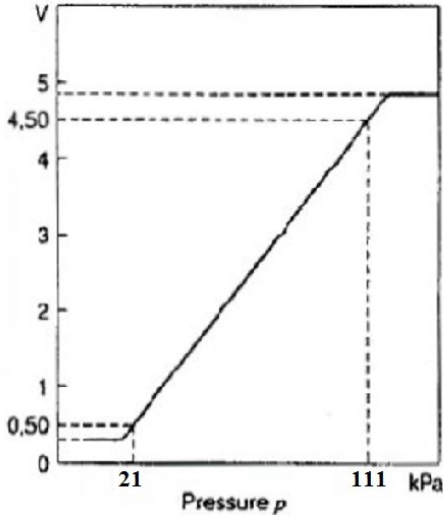
Wenn ein KMS ECU verwendet wird, müssen diese Werte in der KMS ECU Software eingestellt werden. Siehe Abbildung unten für ein Beispiel:



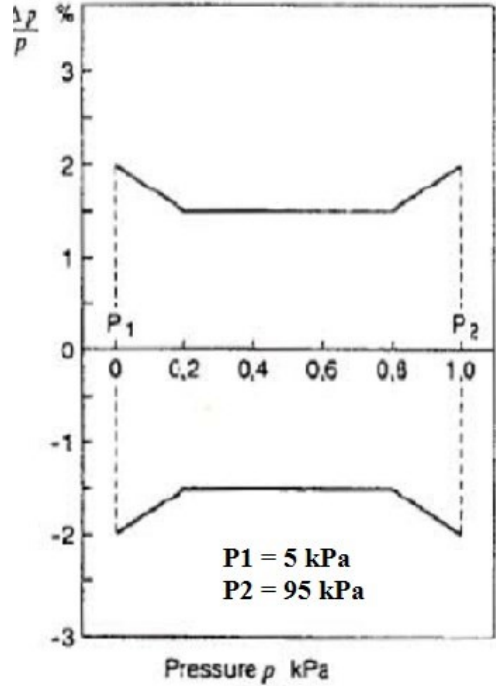
Technical data		Min. Typical Max.		
		Min.	Typical	Max.
Supply voltage Uv	Volt	4.74	5.1	5.46
Current input Iv at Uv = 5 V	mA	-	6	10
Minimum pressure offset (0 to 85°C) Volt		0.241	0.306	0.371
Accuracy (at 25°C)	Volt	-	0.0701	-
Upper Limit at Uv = 5 V	Volt	4.476	4.606	4.736
Response time 10/90	ms	-	1	-
Warm up time	ms	-	20	-
Operating temperature	Deg. C	-40	0 to 85	125

KMS Drucksensor 100 kPa

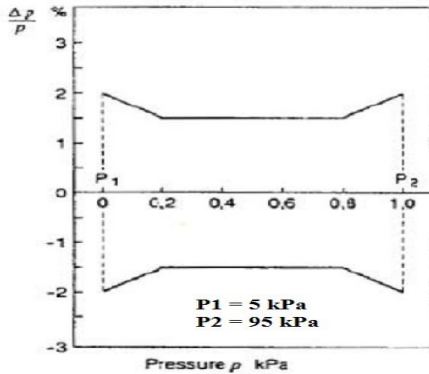
Characteristic curve ($U_V = 5.0V$)



Characteristic-curve tolerance



Characteristic-curve tolerance



KMS Drucksensor 100 kPa



Spaarpot-Oost 19

T +31(0)40 285 4064

5667 KT Geldrop

E info@vankronenburg.nl

The Netherlands

W kms.vankronenburg.nl

*Please visit our website for more information, manuals, software and prices:
kms.vankronenburg.nl*